

Direct Forklift and Equipment

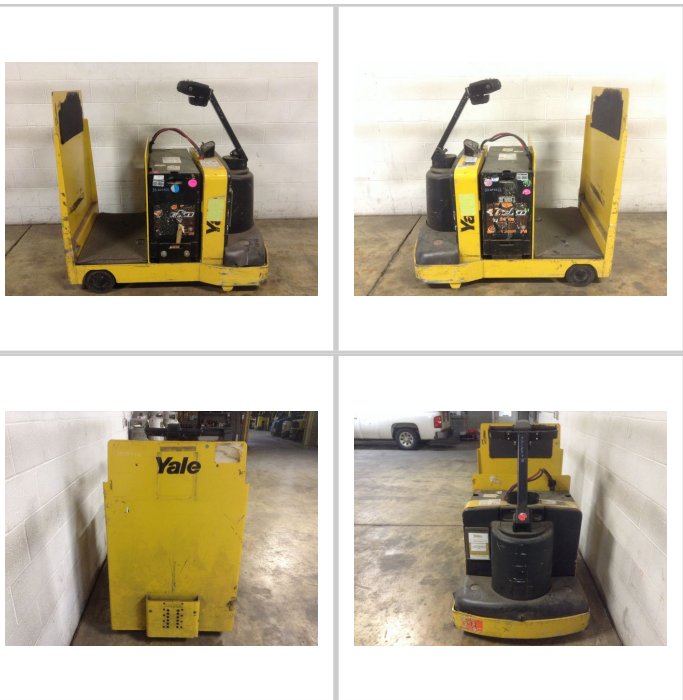
7885 Southern Blvd, Boardman OH 44512

www.directforklift.com

330.726.4050

YT1597N

Make	YALE
Model	MTR005LFN24T
Serial Number	C902N01597N
Year	2015
Hours	10500
Capacity	700
Tire Type	Cushion
Fuel	ELECTRIC
Hydraulic Controls	
Hydraulic Functions	
Mast Height Lowered	
Max Lift Height	
Free Lift	
Mast Stage	
Fork Length	
Drive Tire Size	
Steer Tire Size	
Attachments	
Key Included?	Yes
Weight	1240
Battery Included	Yes
Battery Voltage	24
Unit Operating?	Yes



Fork Condition	
Upright Condition	
Lift Cylinder Condition	
Hydraulics Condition	
Carriage Condition	
Drive Axle Condition	Good
Brakes Condition	Good
Parking Brake Condition	Good
Shift Action Condition	Good
Steer Axle Condition	Good
Sheet Metal Condition	Good
Drive Tire Condition	Worn
Drive Tire Tread	40%
Steer Tire Condition	
Steer Tire Tread	
Electrical System Condition	Good
Seat Condition	Torn
Lights Condition	
Drive Motor	Good

Contact us for additional information on this unit!!!

Shipping dimensions in inches (")

Length		Add fork length or attachment dimensions when applicable
Width		
Height		