

Direct Forklift and Equipment

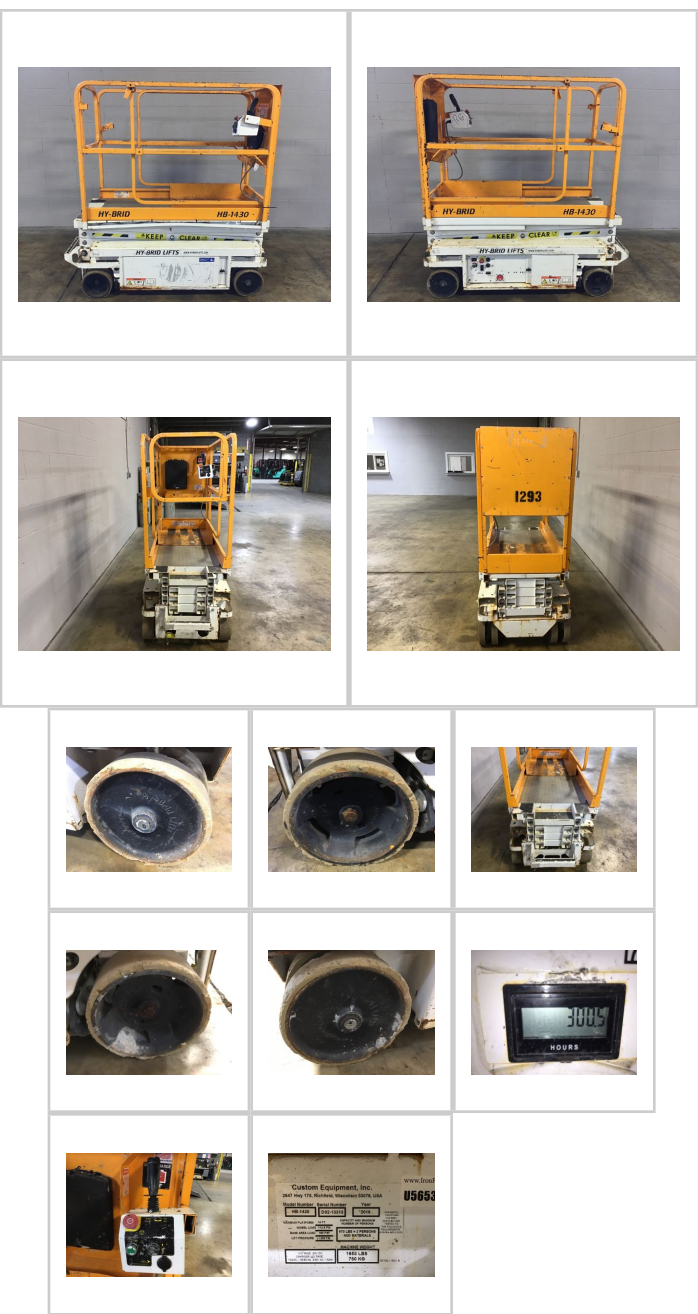
7885 Southern Blvd, Boardman OH 44512

www.directforklift.com

330.726.4050

YI3313

Make	HYBRID
Model	HB-1430
Serial Number	D02-13313
Year	2016
Hours	300.5
Capacity	670
Tire Type	Cushion
Fuel	ELECTRIC
Hydraulic Controls	Hand Control
Hydraulic Functions	One
Mast Height Lowered	69
Max Lift Height	168
Free Lift	Yes
Mast Stage	
Fork Length	
Drive Tire Size	10X4
Steer Tire Size	10X2
Attachments	
Key Included?	No
Weight	1645
Battery Included	Yes
Battery Voltage	24
Unit Operating?	No



Fork Condition	
Upright Condition	
Lift Cylinder Condition	
Hydraulics Condition	Good
Carriage Condition	
Drive Axle Condition	Good
Brakes Condition	Good
Parking Brake Condition	Good
Shift Action Condition	Good
Steer Axle Condition	Good
Sheet Metal Condition	Fair
Drive Tire Condition	Worn
Drive Tire Tread	10%
Steer Tire Condition	Worn
Steer Tire Tread	10%
Electrical System Condition	Good
Seat Condition	
Lights Condition	
Drive Motor	Good
Hydraulic Pump Motor	Good
Pwr Strg Motor	Good

Shipping dimensions in inches (")

Length	70.5	Add fork length or attachment dimensions when applicable
Width	30.5	
Height	70	

Contact us for additional information on this unit!!!