

Direct Forklift and Equipment

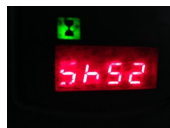
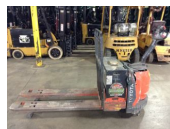
7885 Southern Blvd, Boardman OH 44512

www.directforklift.com

330.726.4050

TY0385

Make	TOYOTA
Model	8HBW30
Serial Number	8HBW30-40385
Year	2012
Hours	2545
Capacity	6000
Tire Type	Cushion
Fuel	ELECTRIC
Hydraulic Controls	Hand Control
Hydraulic Functions	One
Mast Height Lowered	3.25
Max Lift Height	8.5
Free Lift	Yes
Mast Stage	
Fork Length	60
Drive Tire Size	12x4.5
Steer Tire Size	3.25x5.9
Attachments	
Key Included?	Yes
Weight	2740
Battery Included	Yes
Battery Voltage	24
Unit Operating?	Yes
Overall Rating	Fair
Overall Appearance	Fair



Fork Condition	Good
Upright Condition	Good
Lift Cylinder Condition	Good
Hydraulics Condition	Good
Carriage Condition	Good
Drive Axle Condition	Good
Brakes Condition	Good
Parking Brake Condition	Good
Shift Action Condition	Good
Steer Axle Condition	Good
Sheet Metal Condition	Good
Drive Tire Condition	Worn
Drive Tire Tread	40%
Steer Tire Condition	Worn
Steer Tire Tread	45%
Electrical System Condition	Needs Work
Seat Condition	
Lights Condition	
Drive Motor	Good
Hydraulic Pump Motor	Good

Contact us for additional information on this unit!!!