

# Direct Forklift and Equipment

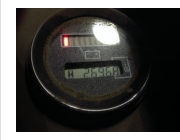
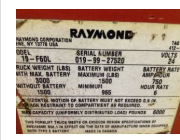
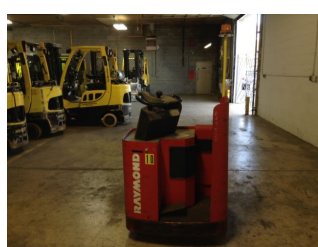
7885 Southern Blvd, Boardman OH 44512

www.directforklift.com

330.726.4050

RA7520

Make	RAYMOND
Model	19-F60L
Serial Number	019-99-27520
Year	1999
Hours	2697
Capacity	6000
Tire Type	Cushion
Fuel	ELECTRIC
Hydraulic Controls	Hand Control
Hydraulic Functions	one
Mast Height Lowered	
Max Lift Height	
Free Lift	Yes
Mast Stage	
Fork Length	49
Drive Tire Size	
Steer Tire Size	
Attachments	
Key Included?	Yes
Weight	1500
Battery Included	No
Battery Voltage	24
Unit Operating?	Yes
Overall Rating	Fair
Overall Appearance	Fair



Fork Condition	Good
Upright Condition	Sloppy
Lift Cylinder Condition	Good
Hydraulics Condition	Good
Carriage Condition	Sloppy
Drive Axle Condition	Good
Brakes Condition	Good
Parking Brake Condition	Good
Shift Action Condition	Good
Steer Axle Condition	Good
Sheet Metal Condition	Good
Drive Tire Condition	Worn
Drive Tire Tread	65%
Steer Tire Condition	Worn
Steer Tire Tread	75%
Electrical System Condition	Good
Seat Condition	Torn
Lights Condition	
Drive Motor	Good
Hydraulic Pump Motor	Good

**Shipping dimensions in inches (")**

Length	92	Add fork length or attachment dimensions when applicable
Width	40	
Height	75	

Contact us for additional information on this unit!!!