

Direct Forklift and Equipment

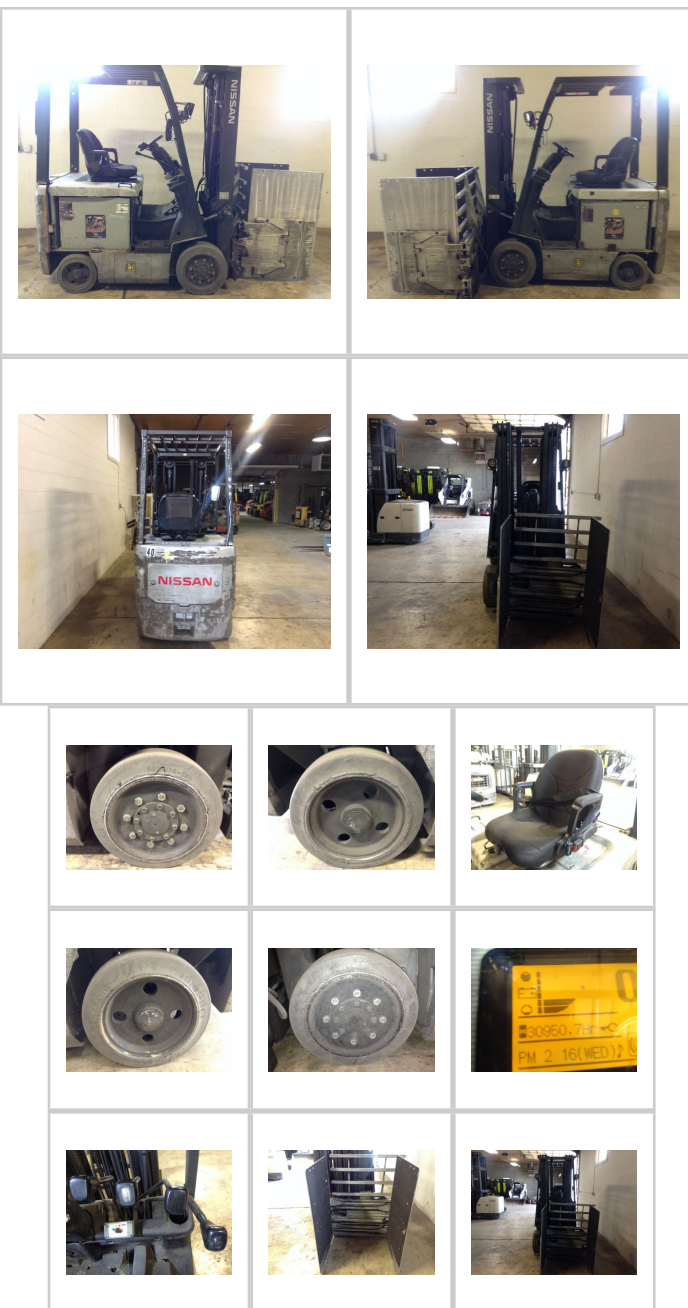
7885 Southern Blvd, Boardman OH 44512

www.directforklift.com

330.726.4050

NI0589

| | |
|---------------------|--------------------|
| Make | NISSAN |
| Model | MCP1B2L20S |
| Serial Number | CP1B2-9C0589 |
| Year | 2010 |
| Hours | 30951 |
| Capacity | 4000 |
| Tire Type | Cushion |
| Fuel | ELECTRIC |
| Hydraulic Controls | Cowl |
| Hydraulic Functions | Four |
| Mast Height Lowered | 89 |
| Max Lift Height | 203 |
| Free Lift | Yes |
| Mast Stage | Three |
| Fork Length | |
| Drive Tire Size | 21x7x15 |
| Steer Tire Size | 16.25x6x11.25 |
| Attachments | Clamp w/side shift |
| Key Included? | Yes |
| Weight | 7275 |
| Battery Included | Yes |
| Battery Voltage | 36 |
| Unit Operating? | Yes |
| Overall Rating | Fair |
| Overall Appearance | Fair |



| | |
|-----------------------------|------------|
| Fork Condition | |
| Upright Condition | Good |
| Lift Cylinder Condition | Good |
| Hydraulics Condition | Good |
| Carriage Condition | Good |
| Drive Axle Condition | Good |
| Brakes Condition | Good |
| Parking Brake Condition | Needs Attn |
| Shift Action Condition | Good |
| Steer Axle Condition | Good |
| Sheet Metal Condition | Fair |
| Drive Tire Condition | Worn |
| Drive Tire Tread | 60% |
| Steer Tire Condition | Worn |
| Steer Tire Tread | 75% |
| Electrical System Condition | Good |
| Seat Condition | Good |
| Lights Condition | Good |
| Drive Motor | Good |
| Hydraulic Pump Motor | Good |
| Pwr Strg Motor | Good |

Shipping dimensions in inches (")

| | | |
|--------|----|--|
| Length | 90 | Add fork length or attachment dimensions when applicable |
| Width | 48 | |
| Height | 90 | |

Contact us for additional information on this unit!!!