

Direct Forklift and Equipment

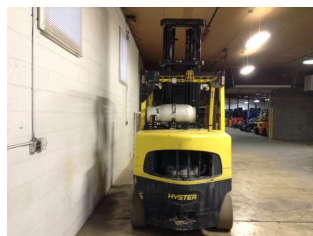
7885 Southern Blvd, Boardman OH 44512

www.directforklift.com

330.726.4050

HY2439J

Make	HYSTER	
Model	S155FT	
Serial Number	E024V02439J	
Year	2011	
Hours	14595	
Capacity	15500	
Tire Type	Cushion	
Fuel	LP	
Hydraulic Controls	Cowl	
Hydraulic Functions	Three	
Mast Height Lowered	141.5	
Max Lift Height	204.7	
Free Lift	No	
Mast Stage	Two	
Fork Length	47	
Drive Tire Size	28x12x22	
Steer Tire Size	22x8x16	
Attachments	Integrated SS 74" w	
Key Included?	Yes	
Weight	23370	
Unit Operating?	Yes	
Overall Rating	Fair	
Overall Appearance	Good	



Fork Condition	Good
Upright Condition	Good
Lift Cylinder Condition	Good
Hydraulics Condition	Good
Carriage Condition	Good
Drive Axle Condition	Good
Brakes Condition	Good
Parking Brake Condition	Good
Shift Action Condition	Good
Steer Axle Condition	Good
Sheet Metal Condition	Good
Drive Tire Condition	Worn
Drive Tire Tread	25%
Steer Tire Condition	Worn
Steer Tire Tread	25%
Electrical System Condition	Good
Seat Condition	Torn
Lights Condition	Good
Engine Condition	Good
Cooling System Condition	Good

Shipping dimensions in inches (")

Length	125
Width	78
Height	142

Add fork length or attachment dimensions when applicable

Contact us for additional information on this unit!!!