

Direct Forklift and Equipment

7885 Southern Blvd, Boardman OH 44512

www.directforklift.com

330.726.4050

YT1893L

Type of Equipment	Standard Forklift
Make	Yale

Model	GLC080VXNGSE088
Serial Number	F818V01893L

Year	2013
Hours	8771



Capacity	8000
Tire Type	Cushion
Fuel	LP
Hydraulic Controls	Cowl
Hydraulic Functions	Three
Mast Height Lowered	88.25
Max Lift Height	185.6
Free Lift	Yes
Mast Stage	Three
Fork Length	
Drive Tire Size	22x9x16
Steer Tire Size	18x7x12.125
Attachments	Integrated SS 47.25"W
Key Included?	Yes
Weight	13640
Unit Operating?	Yes

Fork Condition	
Upright Condition	Good
Lift Cylinder Condition	Good
Hydraulics Condition	Good
Carriage Condition	Good
Drive Axle Condition	Good
Brakes Condition	Good
Parking Brake Condition	Good
Shift Action Condition	Good
Steer Axle Condition	Good
Sheet Metal Condition	Fair
Drive Tire Condition	Worn
Drive Tire Tread	5%
Steer Tire Condition	Worn
Steer Tire Tread	5%
Electrical System Condition	Good
Seat Condition	Torn
Lights Condition	Good
Engine Condition	Good
Cooling System Condition	Good

Engine Info	GM 4.3L
-------------	---------

Shipping dimensions in inches (")

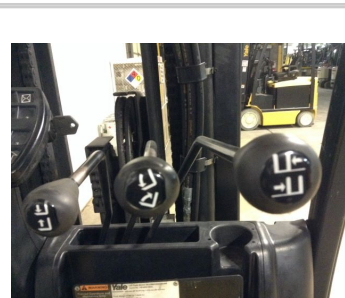
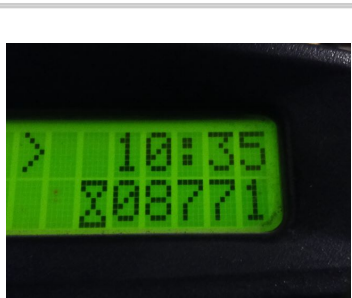
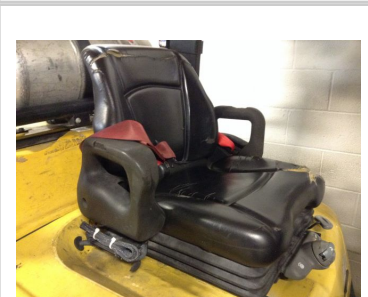
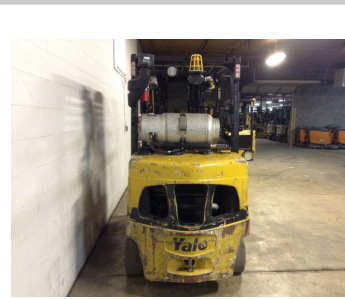
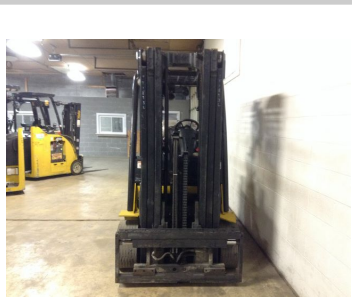
Length	105	Add fork length or attachment dimensions when applicable
Width	51	
Height	87	

YT1893L

Comments

Dry oil residue on both valve covers.
 Engine oil has some color.
 Dry residue around R hyd tank hose & fitting.
 Moist oil residue on hyd pump.
 L SS chrome ram scored; no seeping or leaking.
 R SS chrome ram minor knicks; beginning to seep.
 Hyd oil low on stick; fluid clean.
 Trans fluid below stick; added 1 qt.
 Tilt column assy hard to tilt; will not lock into any other position than full up; damaged.
 Minor play in steer pins & bushings.

Missing: Fuel tray lock out pin & hdw.
 Damaged: rad cover, hip restraint foam worn, floormat, L front fender bent, R hyd tank dent/bent, hood (very mild), upper plastic dash, L rad cover seal, airbox lid, hood seal loose, seat adj rails sticky/worn.
 Needs Adj: Lift chains.



Yale		Lift Truck Model GLC080VXNGSE088	
		Serial No. F818V01893L	
Attachment: 1219 mm (48 in) SS Crg + 1219 mm (48 in) Forks			
Truck Weight 6190 kg (13640 lb)			
Tread Width 1041 mm (41 in)			
Back Tilt 6.0 Degrees			
Size	Front	Rear	
Pressure	22X9X16 Cushion	18X7X12-1/8 Cushion	
MAXIMUM CAPACITY	Load Height	Load Center	
	Dim. A	Dim. B	Dim. C
3410 kg (7500 lb)	4715mm (185.6 in)	610 mm (24 in)	610 mm (24 in)
3460 kg (7650 lb)	4415 mm (173.8 in)	610 mm (24 in)	610 mm (24 in)