

Direct Forklift and Equipment

7885 Southern Blvd, Boardman OH 44512

www.directforklift.com

330.726.4050

CR6102

Type of Equipment	Stand-on Forklift
Make	Crown

Model	RC5525-30
Serial Number	1A446102

Year	2015
Hours	8950



Unit Operating?	No
Overall Rating	Fair
Overall Appearance	Fair

Capacity	3000
Tire Type	Cushion
Fuel	ELECTRIC
Hydraulic Controls	Hand Control
Hydraulic Functions	Three
Mast Height Lowered	84
Max Lift Height	190
Free Lift	Yes
Mast Stage	Three
Fork Length	42
Drive Tire Size	
Steer Tire Size	
Attachments	Side Shift 38" W
Key Included?	Yes
Weight	6724
Battery Included	Yes
Battery Voltage	36

Fork Condition	Good
Upright Condition	Good
Lift Cylinder Condition	Good
Hydraulics Condition	Good
Carriage Condition	Good
Drive Axle Condition	Good
Brakes Condition	Good
Parking Brake Condition	Good
Shift Action Condition	Good
Steer Axle Condition	Good
Sheet Metal Condition	Good
Drive Tire Condition	Worn
Drive Tire Tread	65%
Steer Tire Condition	Worn
Steer Tire Tread	35%
Electrical System Condition	Good
Seat Condition	Good
Lights Condition	Missing

Shipping dimensions in inches (")

Length	70	Add fork length or attachment dimensions when applicable
Width	42	
Height	89	

Battery compartment dimensions (")

Length	16
Width	38
Height	31

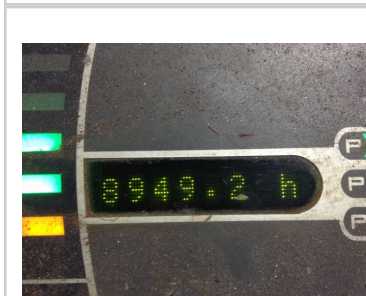
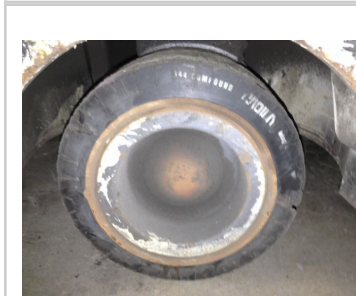
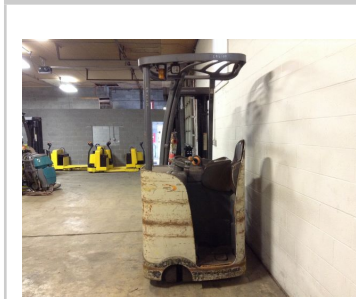
Drive Motor	Good
Hydraulic Pump Motor	Good
Pwr Strg Motor	Good
Traction Hours	8952
Hydraulic Hours	8393

CR6102

Comments

Inspection completed on external visuals only; unit has bad battery installed.
Drive motors appear ok, unable to fully test; limited drive distance on extension cord.
Wet oily residue above steer assy; source unclear, needs further diag.
Unit covered in surface rust.
Last service listed 11-27-19 @ 8913 hrs.

Missing: Operator knee pad, both front worklight assys, mounts & guards.
Damaged: R front fender dent, LBR bent very mildly, OHG bent mildly, grounding strap.
Needs Adj: Lift chains.



Units of measure: kg/mm (lb/in)	
Battery Weight	1025 (2270) lbs
Weight with Battery (15% reserve)	3050 (6724) lbs
Battery Type	EO
Max. Speed (with 200 lbs load)	2.85 (1.70) mph
Model Number	RC652E-30
Serial Number	1A448102
Production Date	11/27/19
Country of Origin	China
Comments	31190C-HACRECAL