

# Direct Forklift and Equipment

7885 Southern Blvd, Boardman OH 44512

[www.directforklift.com](http://www.directforklift.com)

330.726.4050

CL0136

Type of Equipment	Standard Forklift
Make	Clark

Model	GEX40
Serial Number	GEX450-0136-9868KF

Year	2014
Hours	6689



Unit Operating?	Yes
Overall Rating	Fair
Overall Appearance	Good

Capacity	8000
Tire Type	Pneumatic
Fuel	ELECTRIC
Hydraulic Controls	Hand Control
Hydraulic Functions	Four
Mast Height Lowered	103
Max Lift Height	216
Free Lift	Yes
Mast Stage	Three
Fork Length	
Drive Tire Size	250-15 -7.00
Steer Tire Size	21X8X9-6.00
Attachments	
Key Included?	No
Weight	12550
Battery Included	Yes
Battery Voltage	80

Fork Condition	
Upright Condition	Good
Lift Cylinder Condition	Good
Hydraulics Condition	Good
Carriage Condition	Good
Drive Axle Condition	Good
Brakes Condition	Good
Parking Brake Condition	Good
Shift Action Condition	Good
Steer Axle Condition	Good
Sheet Metal Condition	Good
Drive Tire Condition	Worn
Drive Tire Tread	60%
Steer Tire Condition	Worn
Steer Tire Tread	40%
Electrical System Condition	Good
Seat Condition	Good
Lights Condition	Good

Drive Motor	Noisy
Hydraulic Pump Motor	Good
Pwr Strg Motor	Good

### Shipping dimensions in inches (")

Length	124	Add fork length or attachment dimensions when applicable
Width	54.5	
Height	102	

### Battery compartment dimensions (")

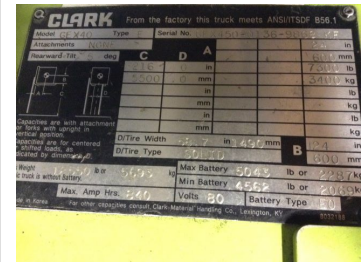
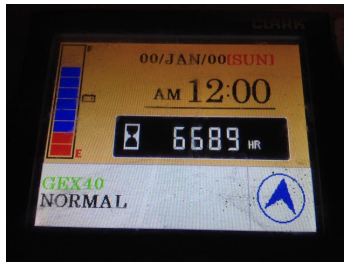
Length	39.25
Width	40.5
Height	30.25

CL0136

Comments

Unit needs RFID key to turn on, no key provided at delivery: physical ignition does nothing.  
 Dry oily residue bottom of fwd skid plate; no drips.  
 Dry oily res bottom of orbitrol & hoses; no drips.  
 R side st/cyl shows early signs of seeping; no leaks  
 Hydraulics have delay when released; functions continue to operate for brief second.  
 Dr motor has a whirr/whine noise at higher speeds.  
 Brakes work; pedal little soft.  
 Rear WS wiper motor assy not wired in.  
 Rear defroster not wired in & defroster switch non operational.  
 Front electric defroster fan works, fan slows down when turned on & no heat radiating; rec diagnosis.  
 Electric heater core on floor board non operational.  
 BU alarm sounds in fwd & rev.  
 Last service listed 11-1-17 @ 5427 hrs.  
 Tires are solid pneumatics.

Missing: R seat back hinge cover, (1) hood hyd lever rubber plug, front & rear WS wiper arm assy, both cab doors, switch and/or plastic cover on arm rest assy, R lower cab door hinge, R cab door latch post.  
 Damaged: hood cracked, R battery gate bent, (1) arm rest mount bolt, rear window defroster switch, roof mild dent, R front worklight guard/mount bent, L upper carriage bent, seat adj rails sticky, floor mat cut/ mild wear.  
 Needs Adj: Lift chains, tilt sync



CLARK		From the factory this truck meets ANSI/ITSDF B56.1	
Model	Type	Serial No.	ANSI/ITSDF B56.1
CP 4513			
Capacity			5500 lb
Rated Load			2750 kg
Overall Length			1000 mm
Overall Width			490 mm
Overall Height			1600 mm
Wheelbase			1000 mm
Ground Clearance			100 mm
Front Wheel			16" x 6.5"
Rear Wheel			16" x 6.5"
Max. Battery			5062 lb or 2297 kg
Min. Battery			4562 lb or 2074 kg
Max. Amp. Hex.			240
Volts			80
Battery Type			