

Direct Forklift and Equipment

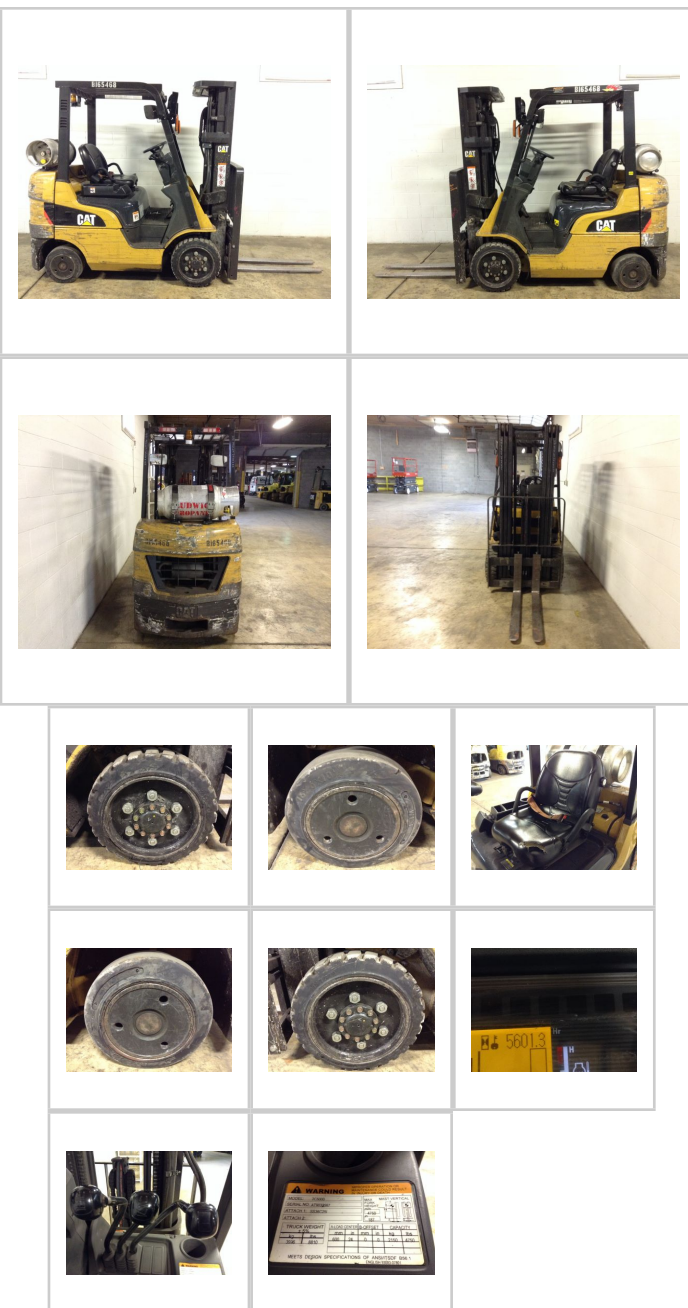
7885 Southern Blvd, Boardman OH 44512

www.directforklift.com

330.726.4050

CT3567-2C5000

Make	CAT
Model	2C5000
Serial Number	AT9033567
Year	
Hours	5601
Capacity	5000
Tire Type	Cushion
Fuel	LP
Hydraulic Controls	Cowl
Hydraulic Functions	Three
Mast Height Lowered	83
Max Lift Height	187
Free Lift	Yes
Mast Stage	Three
Fork Length	42
Drive Tire Size	21x7x15
Steer Tire Size	16x6x10.5
Attachments	Integrated SS 36" W
Key Included?	Yes
Weight	8810
Unit Operating?	Yes
Overall Rating	Fair
Overall Appearance	Good
Engine Info	Nissan K25L



Fork Condition	Good
Upright Condition	Good
Lift Cylinder Condition	Good
Hydraulics Condition	Good
Carriage Condition	Good
Drive Axle Condition	Good
Brakes Condition	Good
Parking Brake Condition	Good
Shift Action Condition	Good
Steer Axle Condition	Good
Sheet Metal Condition	Good
Drive Tire Condition	Good
Drive Tire Tread	75%
Steer Tire Condition	Worn
Steer Tire Tread	65%
Electrical System Condition	Good
Seat Condition	Torn
Lights Condition	Good
Engine Condition	Good
Cooling System Condition	Good

Shipping dimensions in inches (")

Length	100
Width	46
Height	86

Add fork length or attachment dimensions when applicable

Contact us for additional information on this unit!!!