

Direct Forklift and Equipment

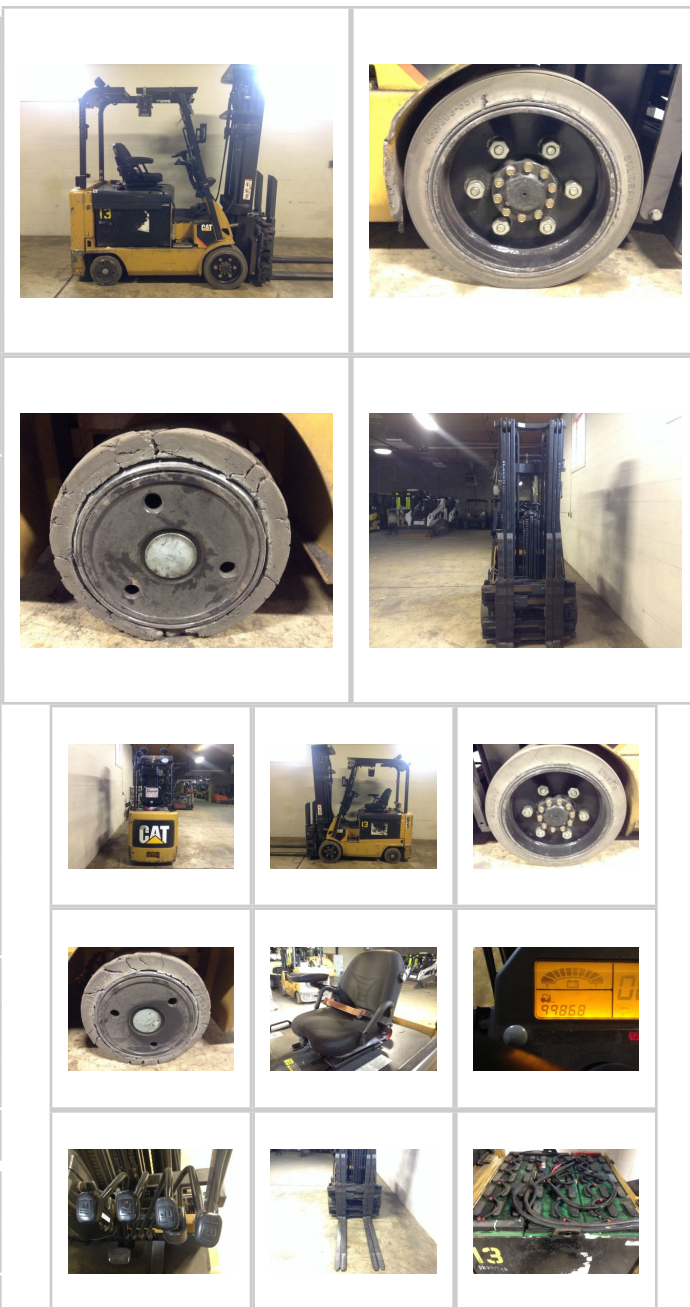
7885 Southern Blvd, Boardman OH 44512

www.directforklift.com

330.726.4050

CT1055-E6500

Make	CAT
Model	E6500
Serial Number	A4EC421055
Year	
Hours	9987
Capacity	6500
Tire Type	Cushion
Fuel	ELECTRIC
Hydraulic Controls	Cowl
Hydraulic Functions	Four
Mast Height Lowered	101
Max Lift Height	221
Free Lift	Yes
Mast Stage	Three
Fork Length	54
Drive Tire Size	21x8x15
Steer Tire Size	16x6x10.5
Attachments	single/double/side shift/fork positioner
Key Included?	Yes
Weight	9765
Battery Included	Yes
Battery Voltage	36
Unit Operating?	Yes
Overall Rating	Fair
Overall Appearance	Good



Fork Condition	Good
Upright Condition	Good
Lift Cylinder Condition	Good
Hydraulics Condition	Good
Carriage Condition	Good
Drive Axle Condition	Good
Brakes Condition	Good
Parking Brake Condition	Needs Attn
Shift Action Condition	Good
Steer Axle Condition	Good
Sheet Metal Condition	Good
Drive Tire Condition	Worn
Drive Tire Tread	40%
Steer Tire Condition	Worn
Steer Tire Tread	20%
Electrical System Condition	Needs Work
Seat Condition	Good
Lights Condition	Missing
Drive Motor	Noisy
Hydraulic Pump Motor	Good
Pwr Strg Motor	Good
Traction Hours	6853
Hydraulic Hours	4707

Contact us for additional information on this unit!!!