

# Direct Forklift and Equipment

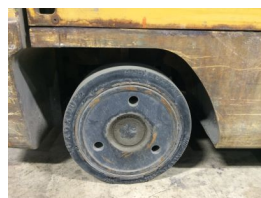
7885 Southern Blvd, Boardman OH 44512

[www.directforklift.com](http://www.directforklift.com)

330.726.4050

CT0249-E6000

|                     |               |
|---------------------|---------------|
| Make                | CAT           |
| Model               | E6000         |
| Serial Number       | A4EC380249    |
| Year                | 2008          |
| Hours               | 8089          |
| Capacity            | 6000          |
| Tire Type           | Cushion       |
| Fuel                | ELECTRIC      |
| Hydraulic Controls  | Cowl          |
| Hydraulic Functions | Three         |
| Mast Height Lowered | 86            |
| Max Lift Height     | 200           |
| Free Lift           | Yes           |
| Mast Stage          | Three         |
| Fork Length         | 42"           |
| Drive Tire Size     | 21x8x15       |
| Steer Tire Size     | 16x6x10-1/2   |
| Attachments         | 38" sideshift |
| Key Included?       | Yes           |
| Weight              | 11495         |
| Battery Included    | Yes           |
| Battery Voltage     | 36            |
| Unit Operating?     | Yes           |
| Overall Rating      | Fair          |
| Overall Appearance  | Fair          |



|                             |             |
|-----------------------------|-------------|
| Fork Condition              | Broken Tips |
| Upright Condition           | Good        |
| Lift Cylinder Condition     | Good        |
| Hydraulics Condition        | Good        |
| Carriage Condition          | Good        |
| Drive Axle Condition        | Good        |
| Brakes Condition            | Good        |
| Parking Brake Condition     | Good        |
| Shift Action Condition      | Good        |
| Steer Axle Condition        | Good        |
| Sheet Metal Condition       | Fair        |
| Drive Tire Condition        | Worn        |
| Drive Tire Tread            | 30%         |
| Steer Tire Condition        | Worn        |
| Steer Tire Tread            | 20%         |
| Electrical System Condition |             |
| Seat Condition              | Torn        |
| Lights Condition            | Good        |
| Drive Motor                 | Good        |
| Hydraulic Pump Motor        | Good        |
| Pwr Strg Motor              | Good        |
| Traction Hours              | 6495        |
| Hydraulic Hours             | 1494        |

Contact us for additional information on this unit!!!