

Direct Forklift and Equipment

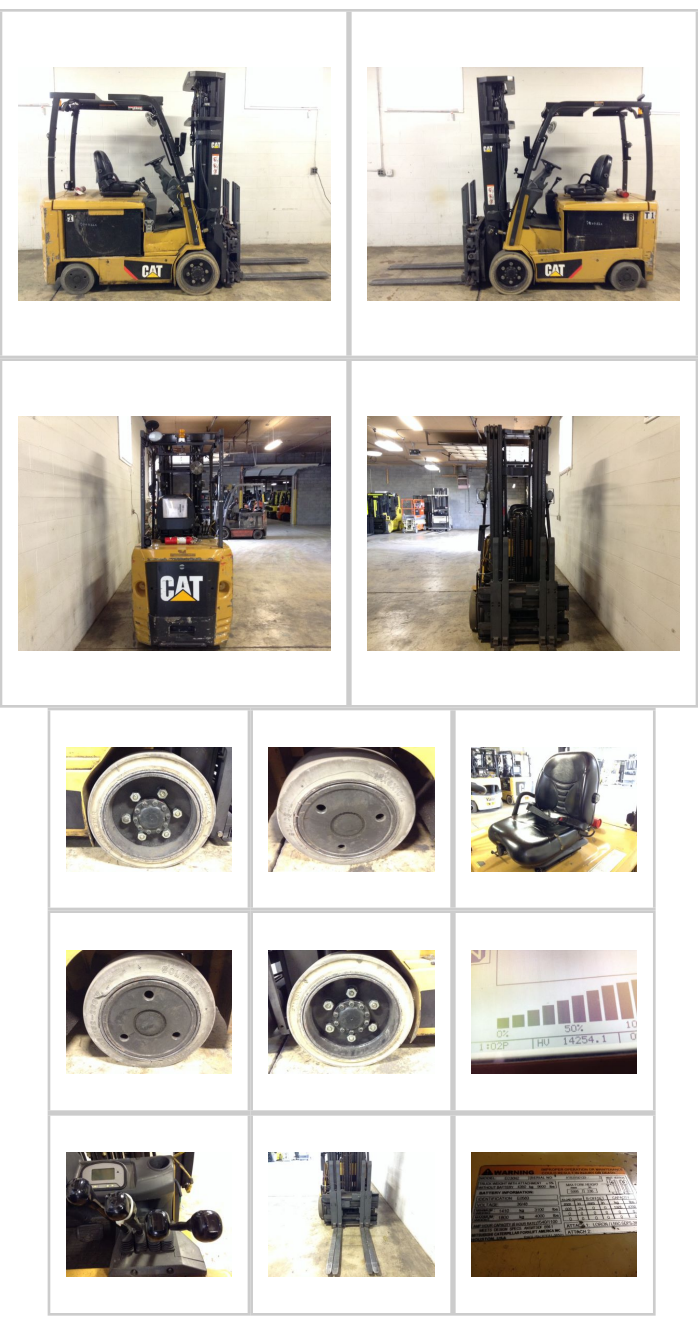
7885 Southern Blvd, Boardman OH 44512

www.directforklift.com

330.726.4050

CT0133-EC30LN2

Make	CAT
Model	EC30LN2
Serial Number	ATB3150133
Year	2013
Hours	14254
Capacity	6000
Tire Type	Cushion
Fuel	ELECTRIC
Hydraulic Controls	Hand Control
Hydraulic Functions	Four
Mast Height Lowered	101
Max Lift Height	236
Free Lift	Yes
Mast Stage	Three
Fork Length	48
Drive Tire Size	21x8x15
Steer Tire Size	16x6x10.5
Attachments	sd/ss/fp
Key Included?	Yes
Weight	9600
Battery Included	Yes
Battery Voltage	48
Unit Operating?	Yes
Overall Rating	Fair
Overall Appearance	Good



Fork Condition	Good
Upright Condition	Good
Lift Cylinder Condition	Good
Hydraulics Condition	Good
Carriage Condition	Good
Drive Axle Condition	Good
Brakes Condition	Good
Parking Brake Condition	Good
Shift Action Condition	Good
Steer Axle Condition	Good
Sheet Metal Condition	Good
Drive Tire Condition	Worn
Drive Tire Tread	55%
Steer Tire Condition	Worn
Steer Tire Tread	50%
Electrical System Condition	Good
Seat Condition	Torn
Lights Condition	Good
Drive Motor	Good
Hydraulic Pump Motor	Good
Pwr Strg Motor	Good

Shipping dimensions in inches (")

Length	100	Add fork length or attachment dimensions when applicable
Width	48	
Height	105	

Contact us for additional information on this unit!!!