

Direct Forklift and Equipment

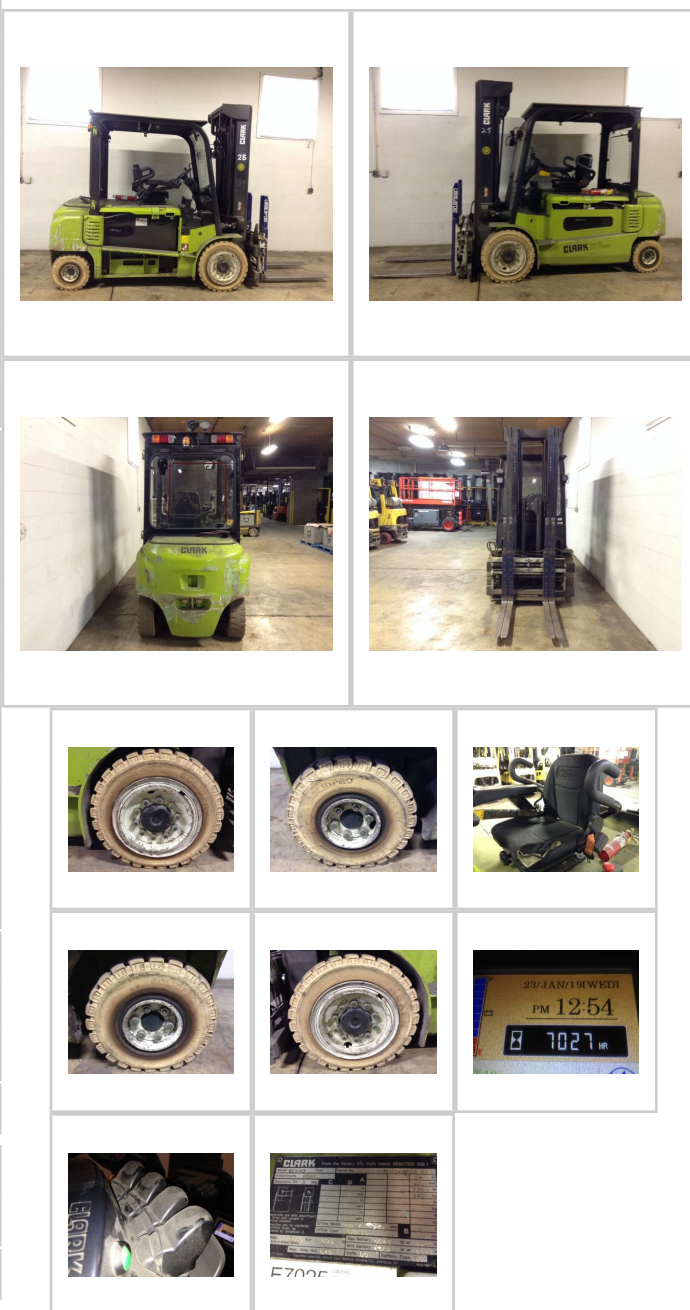
7885 Southern Blvd, Boardman OH 44512

www.directforklift.com

330.726.4050

CL0140

| | |
|---------------------|---------------------------------|
| Make | CLARK |
| Model | GEX40 |
| Serial Number | GEX450-0140-9868KF |
| Year | |
| Hours | 7026 |
| Capacity | 8000 |
| Tire Type | Pneumatic |
| Fuel | ELECTRIC |
| Hydraulic Controls | Finger Tip |
| Hydraulic Functions | Four |
| Mast Height Lowered | 103 |
| Max Lift Height | 216 |
| Free Lift | Yes |
| Mast Stage | Three |
| Fork Length | 42 |
| Drive Tire Size | 250-15 7.50 |
| Steer Tire Size | 21X8-9 6.00 |
| Attachments | Single Double FP w/SS 43.5"W |
| Key Included? | No |
| Weight | 12550 |
| Battery Included | Yes |
| Battery Voltage | 80 |
| Unit Operating? | Yes |
| Overall Rating | Fair |
| Overall Appearance | Good |



| | |
|-----------------------------|-----------|
| Fork Condition | Good |
| Upright Condition | Good |
| Lift Cylinder Condition | Good |
| Hydraulics Condition | Good |
| Carriage Condition | Good |
| Drive Axle Condition | Good |
| Brakes Condition | Low Pedal |
| Parking Brake Condition | Good |
| Shift Action Condition | Good |
| Steer Axle Condition | Good |
| Sheet Metal Condition | Good |
| Drive Tire Condition | Worn |
| Drive Tire Tread | 60% |
| Steer Tire Condition | Worn |
| Steer Tire Tread | 40% |
| Electrical System Condition | Good |
| Seat Condition | Torn |
| Lights Condition | Good |
| Drive Motor | Good |
| Hydraulic Pump Motor | Good |
| Pwr Strg Motor | Good |

Shipping dimensions in inches (")

| | | |
|--------|-------|--|
| Length | 123.5 | Add fork length or attachment dimensions when applicable |
| Width | 56 | |
| Height | 102.5 | |

Contact us for additional information on this unit!!!